

Teams announcements - Ignite 2021



"Teams Connect"

Release – later 2021

Shared channels across companies – no more tenant switching

Full support for chat, meet, call and document co-authoring

Granular admin controls



Meeting enhancements

Release – "soon"

"PowerPoint Live" – see notes, slides, chat and participants. Allow others to move through deck

New presenter modes (standout, reporter and side-by-side)

New view options (dynamic view, people gallery at top)

Live reactions

More meeting controls:

- Invite-only (no forwarding)
- Disable attendee video
- Chat moderation



Microsoft Viva

Release – most features March/April

Insights, Connections and Topics available or rolling out to desktop now

Viva Learning available in April (desktop)

Mobile app updated later this year



Webinars (internal and external)

Release – most features March/April

Custom registration form
Attendee participation reporting

Max 10k users (but 20k until end 2021)

Moderated Q&A

E-mail confirmation - simple join

Integration with Dynamics 365 for campaign integration

No additional licensing beyond E3/E5 required



Teams management

Release – most features April onwards

Scheduled guest access reviews (April)

Multi-geo support (Q2)

Teams app governance – MCAS-powered app risk evaluations (later in 2021)

Teams Rooms enhancements – intelligent speakers, ATP, remote provisioning (soon)

Improved analytics and telemetry – increased privacy, real-time telemetry, Power BI reporting

End-to-end encryption for 1:1 calls (H1 2021)

Power Platform – Ignite 2021 announcements

Governance – analytics

Release – now

- Tenant-wide analytics in Admin Center (COE style)
- See apps, usage, connectors etc. across Power Apps and Power Automate

Governance – control

Release – mainly now

- Granular connector policies (e.g. allow/block specific actions)
- Endpoint filtering (e.g. specific SQL Databases)
- Tenant isolation (block cross-tenant data flow)
- LATER IN 2021 – MIP sensitivity labels

Power Automate Desktop availability

Release – now

- Now available in Windows 10 free

Power BI Premium

Release – now

- Now licensable at the *user* level - \$20 per user per month
- No longer \$5k per month entry point!

Power Fx

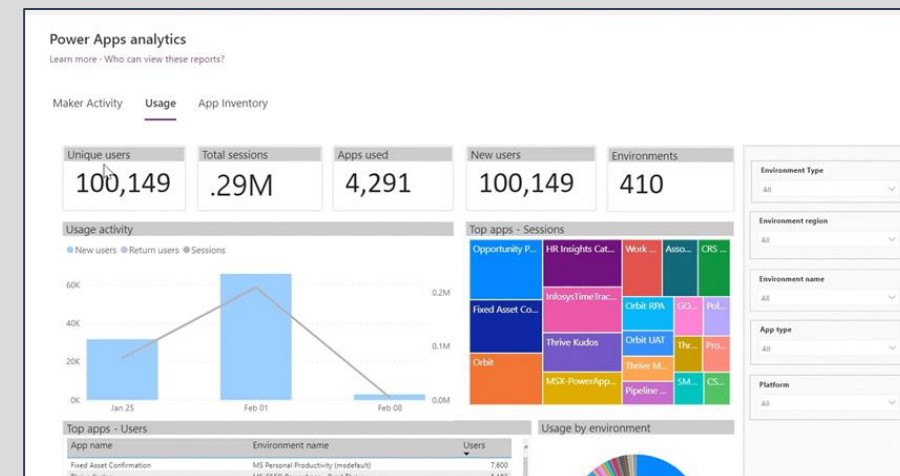
Release – now

- Wider usage of existing Power Apps formula language
- Power Automate, Dataverse apps, PV Agents and more
- Align with Visual Studio and GitHub usage

Power Virtual Agents – enhanced AI

Release – March 2021

- Better bot learning and improvement capabilities



Connector actions

Twitter

Actions	Allowed
Get followers	Yes
Get following	Yes
Get home timeline	Yes
Get my followers	Yes
Get my following	Yes
Get user	Yes
Get user timeline	Yes

Security & Compliance announcements - Ignite 2021

- + **Microsoft 365 multi-geo** – Teams gets similar capabilities to existing SharePoint/Exchange multi-geo – at Team and user level (aimed at data residency rather than performance). **Spring 2021**
- + **Encrypted document co-authoring** – Use Sensitivity Labels (Microsoft Information Protection) and co-authoring/AutoSave together. **Preview now**
- + **DLP for Chrome and on-premises data** – Policies now enforceable in Chrome browser, and DLP support extended to on-premises SharePoint and file shares. **Preview now**
- + **Azure Purview for AWS, SAP and Oracle** – Data governance support extended to non-Microsoft platforms. Scan/classify/protect. **Available now**
- + **End-to-end encryption for Teams calls** – E2E for 1:1 calls (inc. video and screen share) first – other communication types to follow. **Available H1 2021**
- + **Threat Analytics enhancements** – Common incidents/alerts between Azure Sentinel and Microsoft 365 Defender (**available now**) and Threat Analytics within Defender (**preview now**)
- + **End-to-end encryption for Teams calls** – E2E for 1:1 calls (inc. video and screen share) first – other communication types to follow. **Available H1 2021**
- + **Attack Simulator in Microsoft 365** – Launch phishing simulations from Defender for Office 365 – choose fake malware as link/attachment, credential harvest etc. See analytics and guide users to training (from Terranova) . **Preview now**

Attack simulator (preview)

Overview Simulations Payloads

Attack Simulator lets you run benign cyber attack simulations on your organization to test your security policies and practices. [Learn more about attack simulator](#)

Simulation name	Type	Status
test nana1	Credential Harvest	Completed
Testing custom payload	Credential Harvest	In progress
AGP4	Credential Harvest	In progress

View all simulations
Launch a simulation

Simulation coverage

79% users have not experienced the simulation

Simulated users

■ Simulated users ■ Non-simulated users

Launch simulation for non-simulated users
View simulation coverage report

Training completion

0% users have completed training

Training status

■ Completed ■ In progress ■ Incomplete

View training completion report

Behavior impact on compromise rate

24601 less susceptible to phishing, 100% behavior impact

Recommendations

Action

Run a Link in Attachment simulation
You have not run any recent simulations using this technique.

Use payload Test Payload
This payload technique was sent to high number of customers.

Azure Ignite 2021 announcements

Azure Automanage enhancements	Expanded capabilities supporting automated deployment of updates and security configuration, no reboot needed. Now for Linux too. March 2020
IOT - Azure Percept preview	Use Azure AI services at the edge – a platform of integrated devices and services. Support for Cognitive Services, ML, Video Analytics and more for audio/image/video processing and recognition. Preview now.
Azure Backup – launched/GA	Single experience for managing backups across VMs, databases, SQL, SAP, Azure Files, BLOBs, Managed Disks and more. Available now.
New Datacenter for China	New Azure Datacenter for China – services to include Azure, Office 365, Dynamics 365 and Power BI, operated by 21Vianet. Operational in 2022
Azure Resource Mover – launched/GA	Easily move resources between Azure regions, with full dependency analysis, test runs and removal of original resources when successful. Available now.
Azure data enhancements	New - Azure Synapse Pathway. Migrate your data warehouse to Synapse Analytics with ease, from SQL, Snowflake, Netezza and soon, Teradata, Redshift and BigQuery. Support for views, procedures and UDFs coming. Preview now.
Azure Purview coverage expanded	Data governance support extended to AWS S3 containers, SAP and Oracle. Scan/classify/protect using the same labels you use in MIP. Preview now.
Cosmos DB improvements	Point-in-time backup for last 30 days, full RBAC support (AAD) and Synapse Link for Cosmos DB (near real-time analytics). Mix – some GA, some in preview.
Azure Arc new capabilities	Support for Kubernetes management and deployment of Azure ML models – across Azure, other clouds, on-premises and edge devices. Available now.